

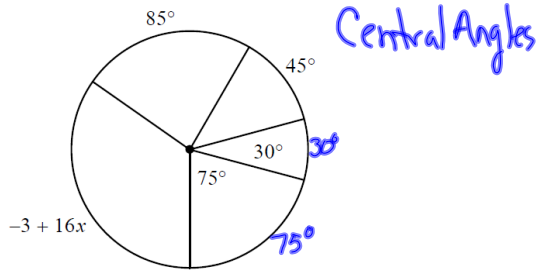
# Circle Unit Review

## Circle Review: Angle Measure

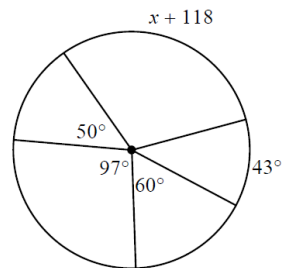
Feb 21-7:49 AM

Feb 21-8:07 AM

1)



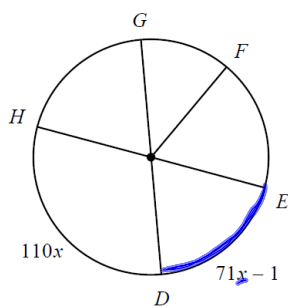
2)



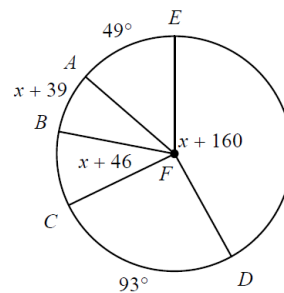
Feb 21-8:08 AM

Feb 21-8:08 AM

3)  $m\widehat{ED}$

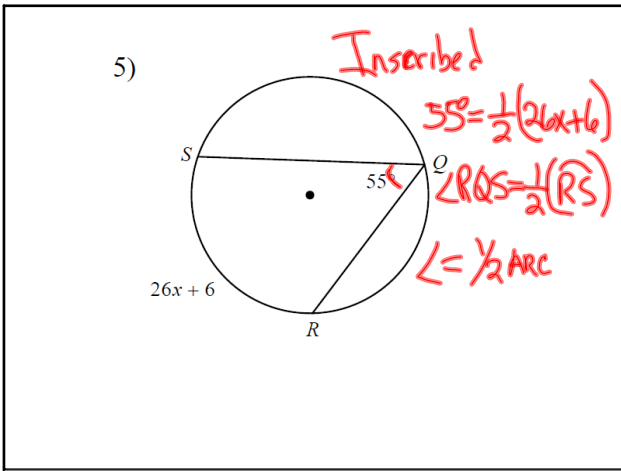


4)  $m\angle EFD$

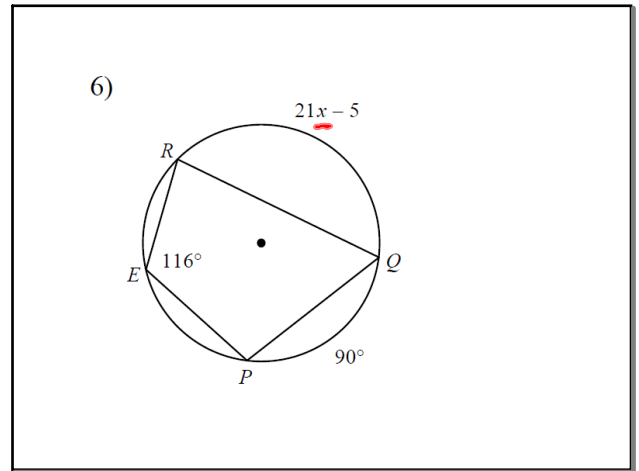


Feb 21-8:08 AM

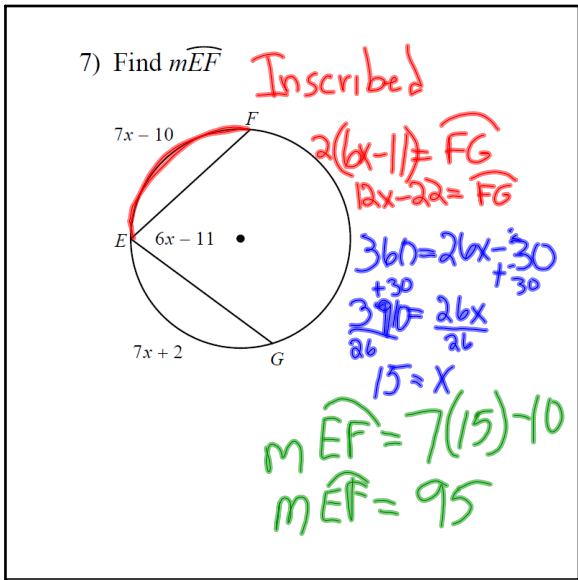
Feb 21-8:09 AM



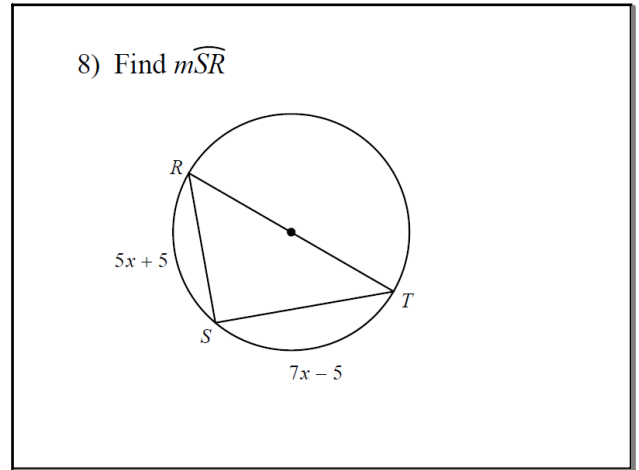
Feb 21-8:09 AM



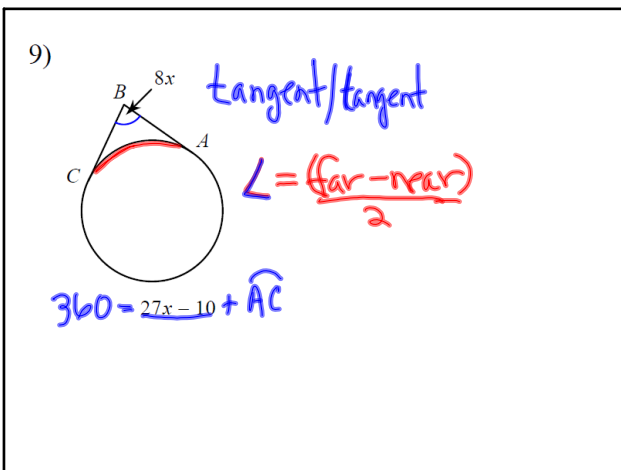
Feb 21-8:09 AM



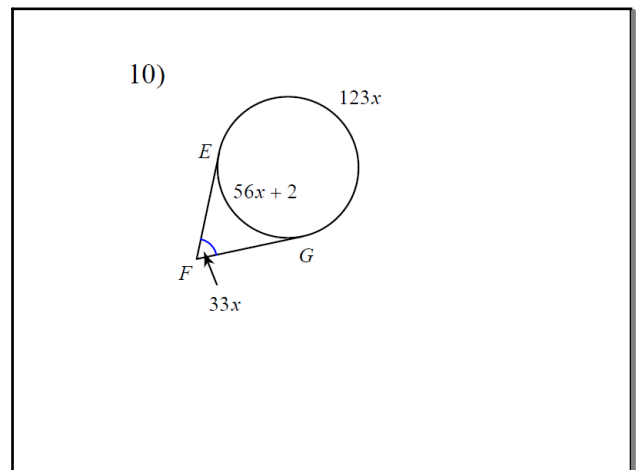
Feb 21-8:09 AM



Feb 21-8:09 AM



Feb 21-8:09 AM



Feb 21-8:10 AM

11)  $m\widehat{DGF} = 1 + 84x$   
Find  $m\widehat{DGF}$

Handwritten work:

$$23x + 4 = \frac{(1 + 84x) - (33x + 8)}{2}$$

$$23x + 4 = \frac{1 + 84x - 33x - 8}{2}$$

$$23x + 4 = \frac{51x - 7}{2}$$

$$23x + 4 = 25.5x - 3.5$$

$$-2.5x + 4 = -3.5$$

$$-2.5x = -7.5$$

$$x = 3$$

Feb 21-8:10 AM

12) Find  $m\angle EDC$

Handwritten work:

$$360 = 38x - 4 + \widehat{CE}$$

$$364 = 38x + \widehat{CE}$$

$$364 - 38x = \widehat{CE}$$

$$25x - 5 = \frac{(364 - 38x) - (38x - 4)}{2}$$

$$25x - 5 = \frac{364 - 38x - 38x + 4}{2}$$

$$63x = 189$$

$$x = 3$$

$$25x - 5 = 184 - 38x$$

$$25x = 189 - 38x$$

Feb 21-8:10 AM

13)

Handwritten work:

$$360 = 237x + 1 + 122$$

$$\angle STU = \frac{\widehat{SU}}{2}$$

$$360 = 237x + 123$$

$$237 = 237x$$

$$1 = x$$

Feb 21-8:10 AM

14)

Feb 21-8:10 AM

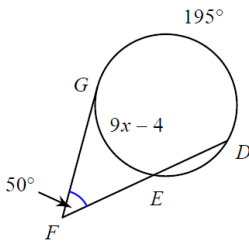
15) Find  $m\angle ABC$

Feb 21-8:10 AM

16) Find  $m\angle ABC$

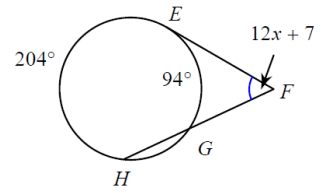
Feb 21-8:10 AM

17)



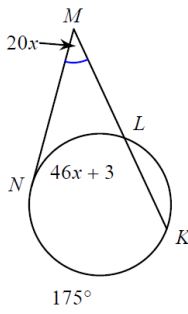
Feb 21-8:11 AM

18)



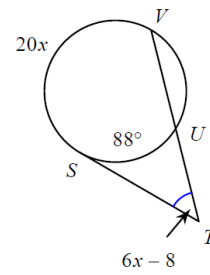
Feb 21-8:11 AM

19) Find  $m\angle NMK$



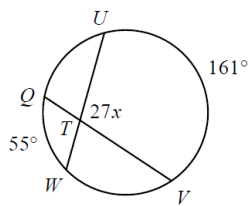
Feb 21-8:11 AM

20) Find  $m\angle STV$



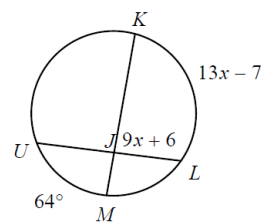
Feb 21-8:11 AM

21)



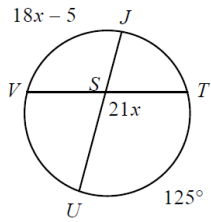
Feb 21-8:11 AM

22)



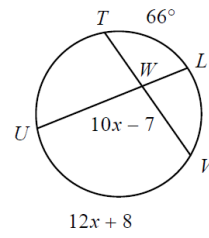
Feb 21-8:11 AM

23) Find  $m\angle TSU$



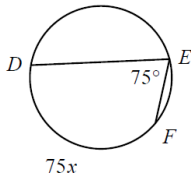
Feb 21-8:11 AM

24) Find  $m\angle VWU$



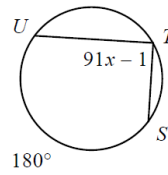
Feb 21-8:12 AM

25)



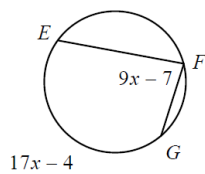
Feb 21-8:12 AM

26)



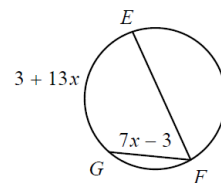
Feb 21-8:12 AM

27) Find  $m\angle EFG$



Feb 21-8:12 AM

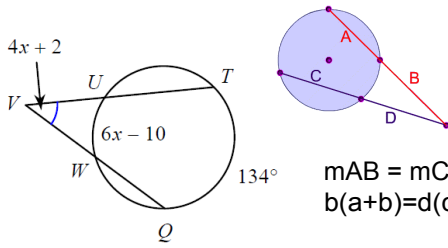
28) Find  $m\angle EFG$



Feb 21-8:12 AM

29) Find  $m\angle TVQ$

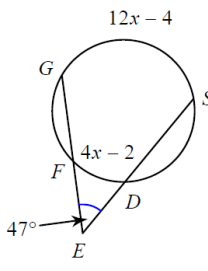
Added after class:



$mAB = mCD$   
 $b(a+b) = d(c+d)$

Feb 21-8:12 AM

30) Find  $m\widehat{SG}$


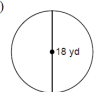


Feb 21-8:12 AM

Circle Review: Length and Area

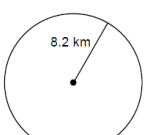
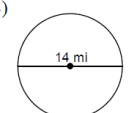
Feb 21-8:13 AM

Find the area of each. Use your calculator's value of  $\pi$ . Round your answer to the nearest tenth.

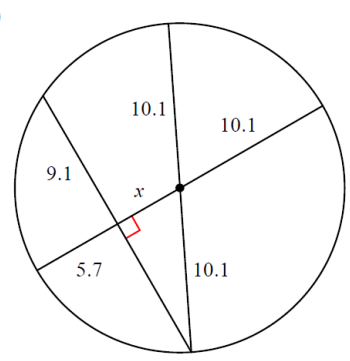
1)  2) 

Feb 21-8:13 AM

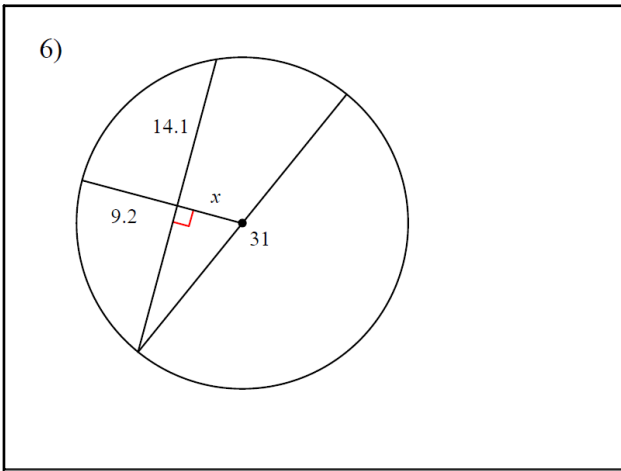
Find the circumference of each circle. Use your calculator's value of  $\pi$  to the nearest tenth.

3)  4) 

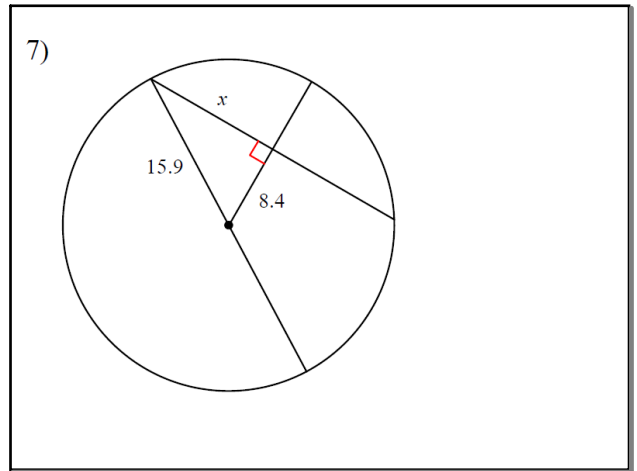
Feb 21-8:13 AM

5) 

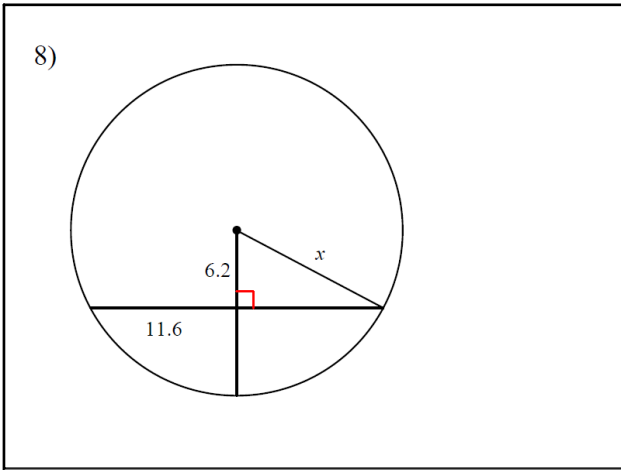
Feb 21-8:14 AM



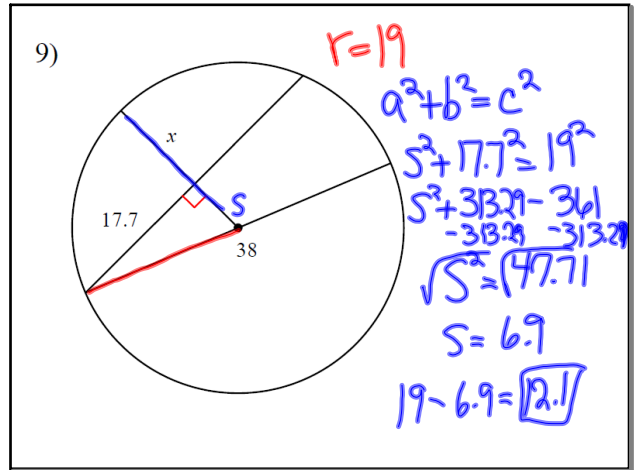
Feb 21-8:14 AM



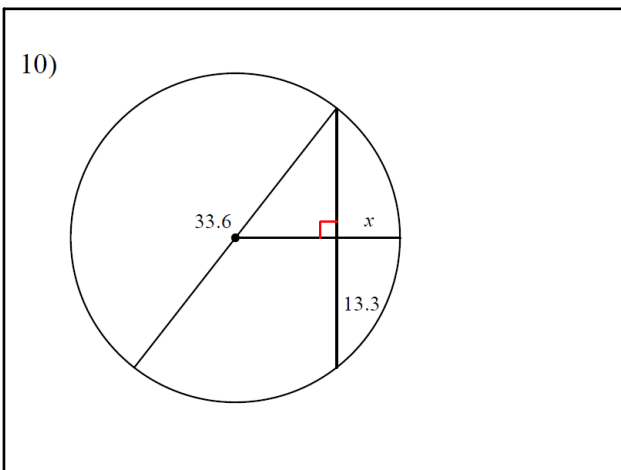
Feb 21-8:14 AM



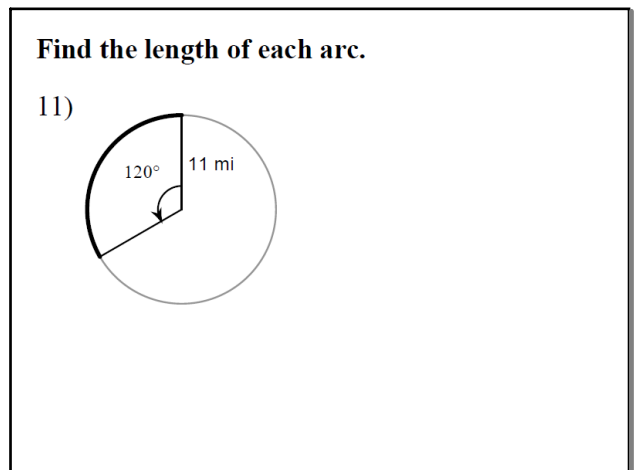
Feb 21-8:14 AM



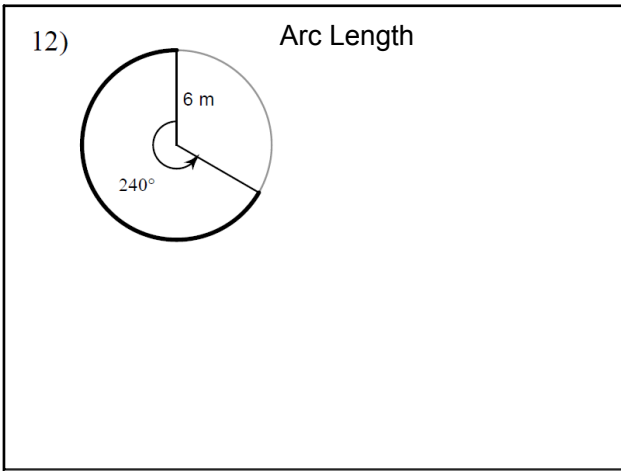
Feb 21-8:15 AM



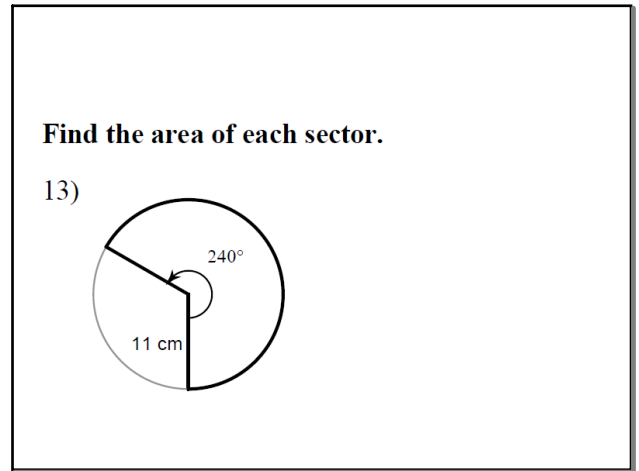
Feb 21-8:15 AM



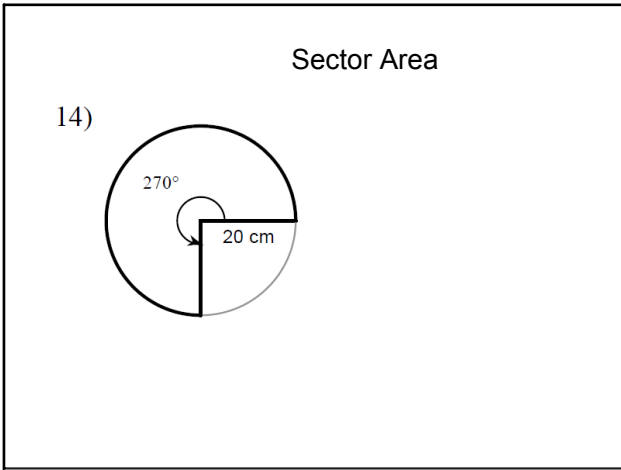
Feb 21-8:15 AM



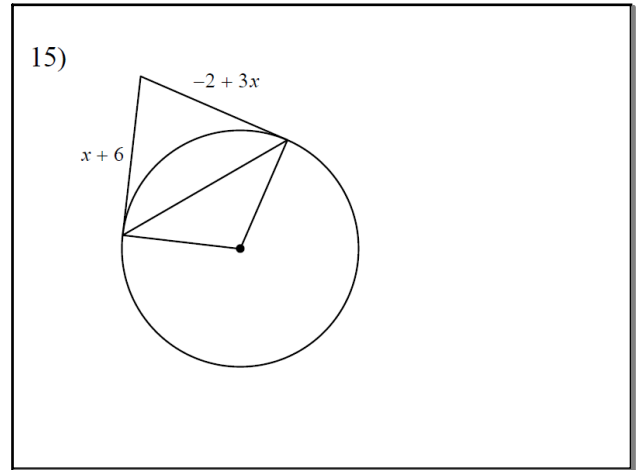
Feb 21-8:15 AM



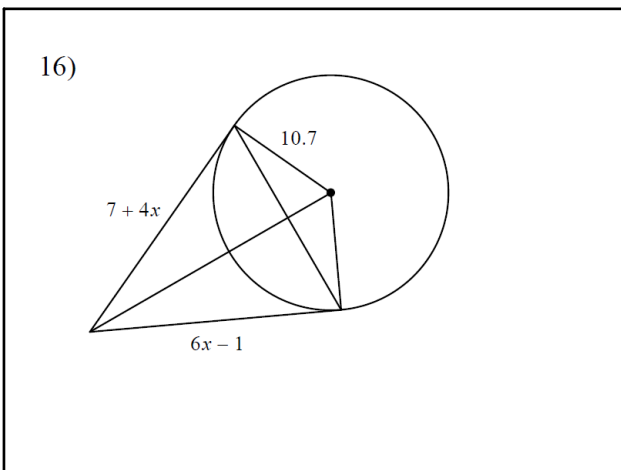
Feb 21-8:16 AM



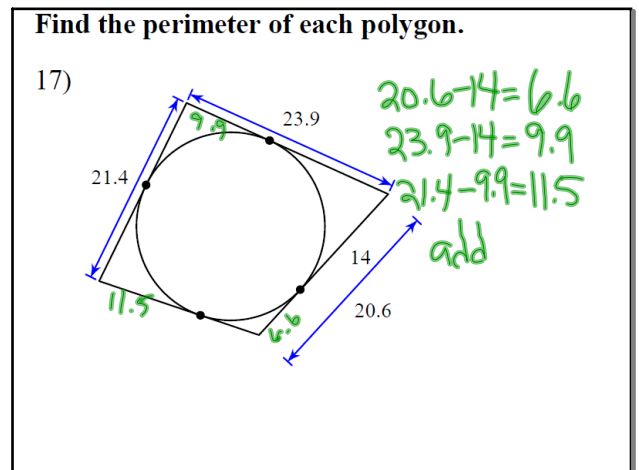
Feb 21-8:16 AM



Feb 21-8:16 AM



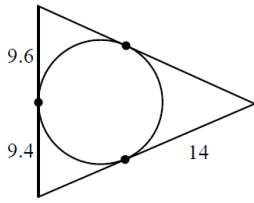
Feb 21-8:17 AM



Feb 21-8:17 AM

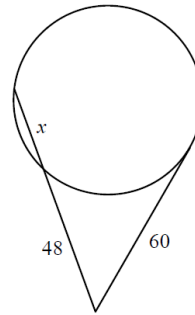
Find the perimeter of each polygon.

18)



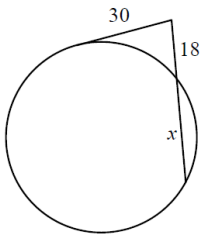
Feb 21-8:17 AM

19)



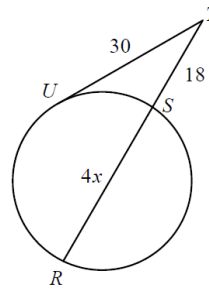
Feb 21-8:18 AM

20)



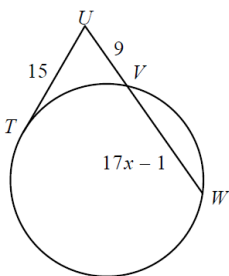
Feb 21-8:18 AM

21) Find  $TR$



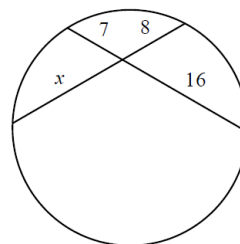
Feb 21-8:18 AM

22) Find  $UW$



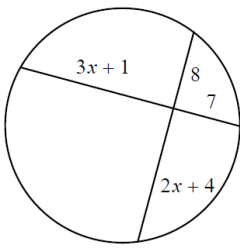
Feb 21-8:18 AM

23)



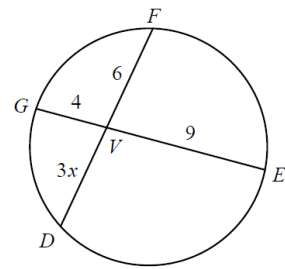
Feb 21-8:18 AM

24)



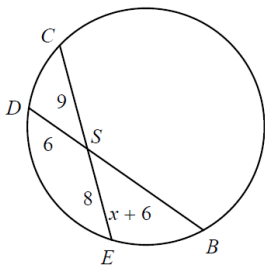
Feb 21-8:18 AM

25) Find  $VD$



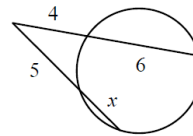
Feb 21-8:19 AM

26) Find  $DB$



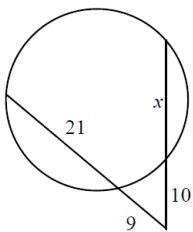
Feb 21-8:19 AM

27)



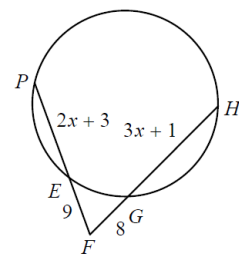
Feb 21-8:19 AM

28)



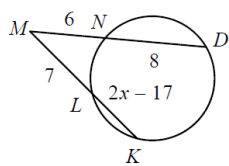
Feb 21-8:19 AM

29) Find  $HF$



Feb 21-8:19 AM

30) Find  $KL$



Feb 21-8:19 AM