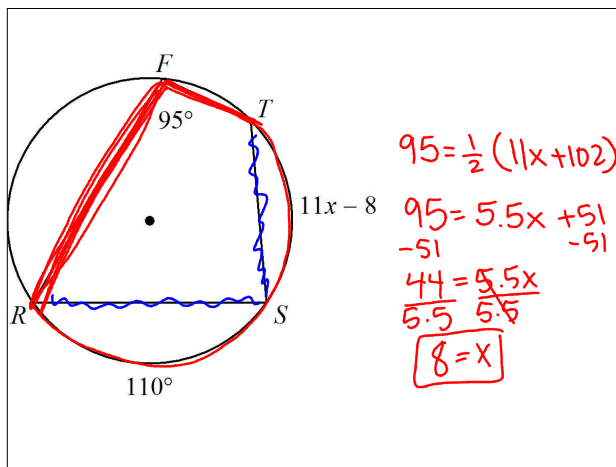
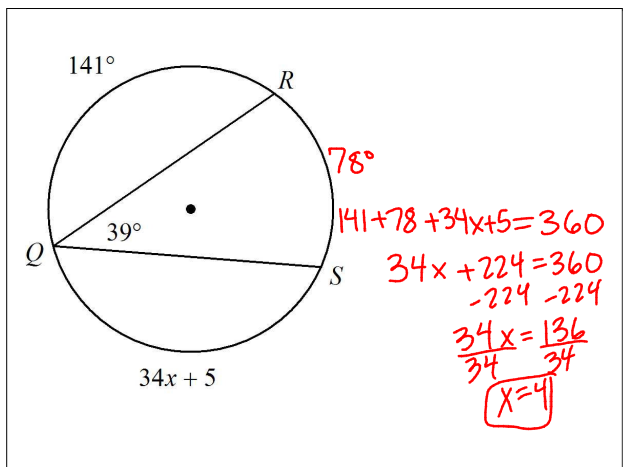
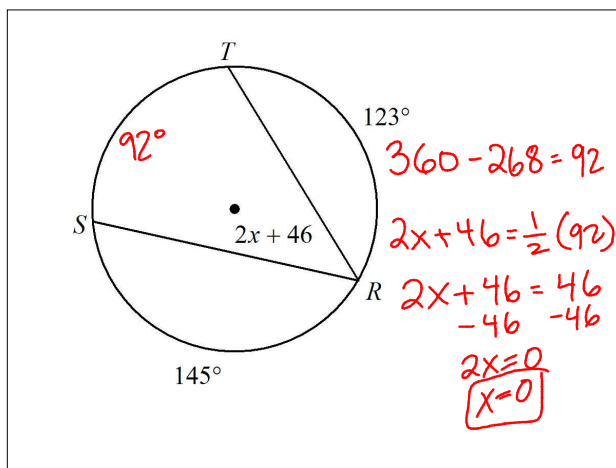
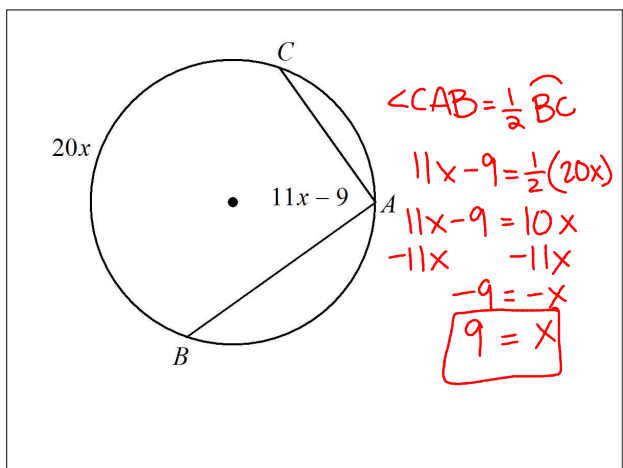
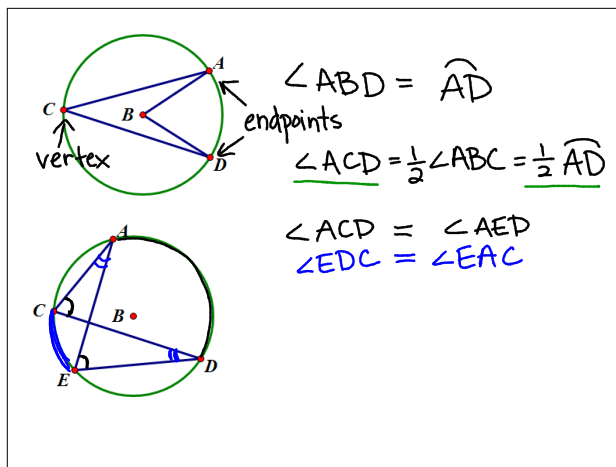
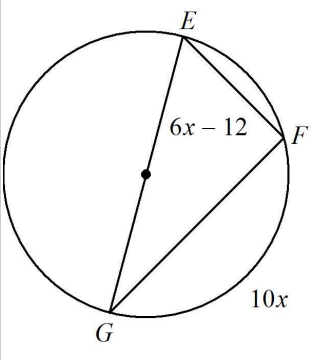


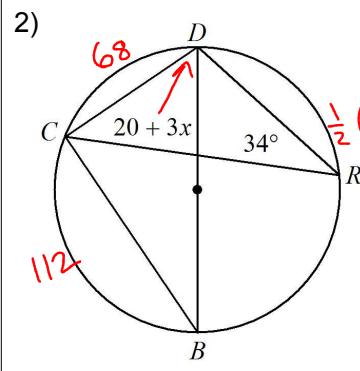
Inscribed Angles





$6x - 12 = \frac{1}{2}(10x)$
 $6x - 12 = 5x$
 $-5x \quad -5x$
 $x - 12 = 0$
 $+12 \quad +12$
 $x = 12$

2)



$\frac{1}{2}(112) = 20 + 3x$
 $56 = 20 + 3x$
 $-20 \quad -20$
 $36 = 3x$
 $\frac{36}{3} = \frac{3x}{3}$
 $12 = x$

