

CHAMBERS OF THE HEART

CN: Use blue for A-A⁴, red for H-H⁴, and your lightest colors for B, C, J, and J. All dotted arrows (A⁴) receive a blue color; all clear arrows (H⁴) receive a red color. (1) Begin with the arrows A⁴ above the title list and above the superior vena cava (A) in the illustration at upper right and color the structures in the order of the title list (A-H³). (2) Color the circulation chart at lower right, beginning with the arrow A⁴ leading into the right atrium (numeral 1). Color the numerals in order from 1 to 4 and related arrows. Do not color the chambers or the vessels in this drawing at lower right.

↘ A⁴
SUPERIOR VENA CAVA^A
INFERIOR VENA CAVA^A
RIGHT ATRIUM^B

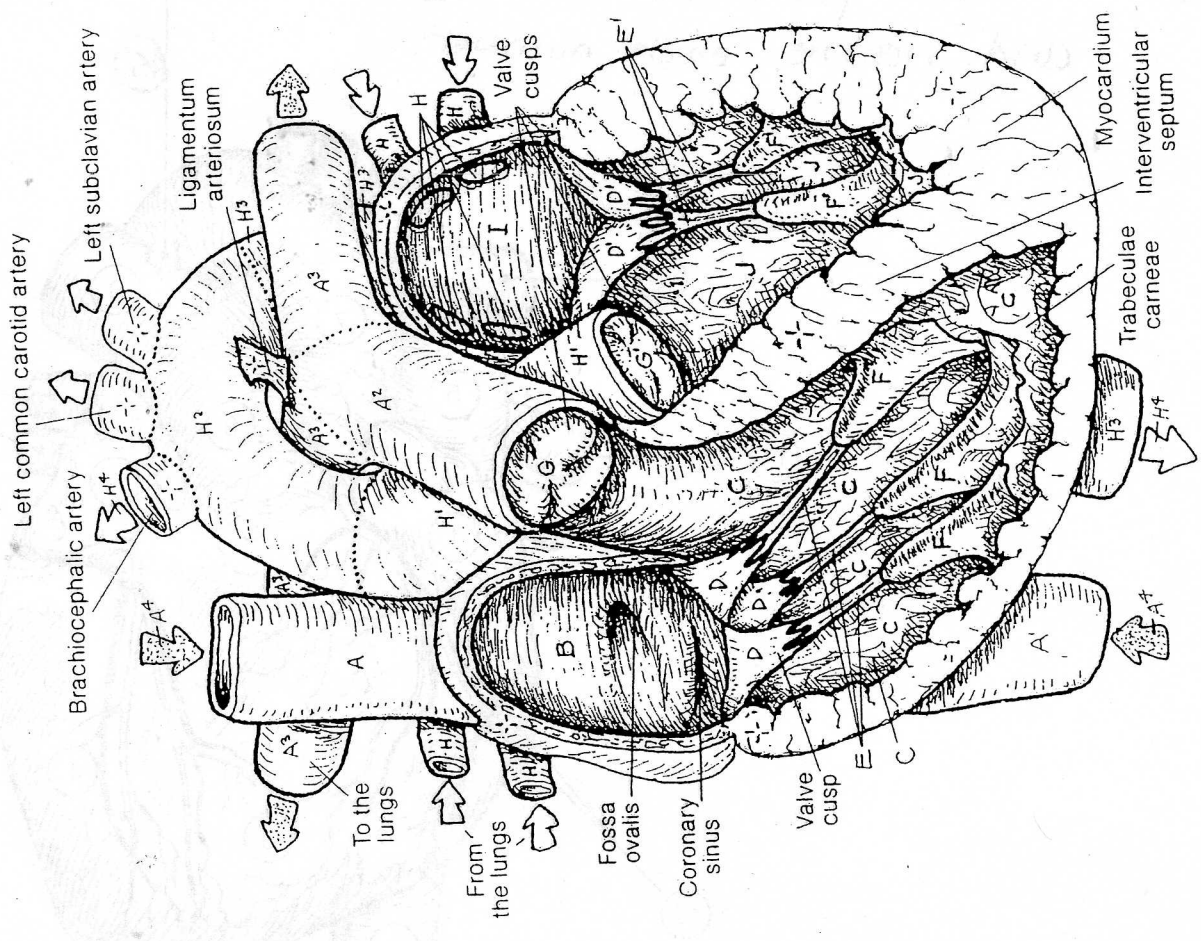
↘
RIGHT VENTRICLE^C
A-V TRICUSPID VALVE^D
CHORDAE TENDINEAE^E
PAPILLARY MUSCLE^F

↘
PULMONARY TRUNK^{A²}
PUL. SEMILUNAR VALVE^G
PUL. ARTERY^{A³}

↘ H⁴
PULMONARY VEIN^H
LEFT ATRIUM^I

↘
LEFT VENTRICLE^J
A-V BICUSPID (MITRAL) VALVE^D
CHORDAE TENDINEAE^E
PAPILLARY MUSCLE^F

↘
ASCENDING AORTA^{H¹}
AORTIC SEMILUNAR VALVE^G
AORTIC ARCH^{H²}
THORACIC AORTA^{H³}



color each part of the heart
and name each number.

